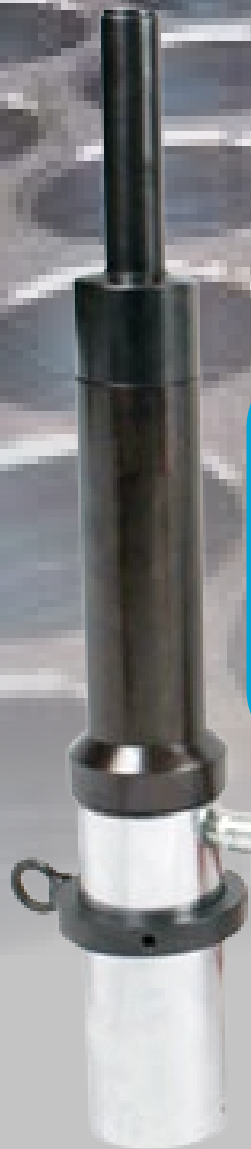




TUBE TOOLS

# AUTO STUB PULLER



**SHINGARE™**  
INDUSTRIES PVT LTD

## MANUFACTURER & EXPORTER OF

Tube Cleaners, Tube Tools, Tube Expanders, Bolting Tools, Impact Sockets,  
Pipe Beveling Machines, Pipe Cold Cutting Machines,  
High Pressure Water Jet Cleaning Machines Tapping Machines

Education is necessary but not a pre-requisite for success in life. Bhartiya Industries is the best example of this theory. **Mr. Suryakant Shingare** (HARIBHAI), the founder of the company is a non-matriculate technocrat with more than 10 years experience in flexible shaft manufacturing. He founded this company in 1989.



## Basic Products:

Engineering products is our forte. We manufacture engineering products such as tube expander, tube cleaner, tube tools, hydraulic tube expansion, tube pulling, and pipe beveling machines. We also deal in manufacture of flexible shaft grinders, construction equipment, hydraulic torque wrench, impact socket, pneumatic tapping machines, and many more...

## Brief History of the Company:



We were a small industry until 2003 engaged in production and supply of different types of flexible shafts for tube cleaning, brushes, flexible shaft grinder, and concrete vibrators. The year 2003 was a watershed year for the company.

**Mr. Pradip Shingare**, son of **Mr. Hari Shingare**, graduated from Mumbai University with a degree in Mechanical Engineering. He had great plans to take the company forward on the route to expansion. He ventured into export of the engineering products. By 2008, the company acquired the reputation as the largest exporter of tube cleaning machines and flexible shafts in India.

The year 2009 saw the expansion of the company into manufacture of products such as Tube expander, tube tools, and tube pulling machines. The company witnessed a record double-digit growth in this product range. In 2011, the company started developing a product range of pipe beveling machines. These machines are extremely popular in India as well as in the overseas market. The year 2013 witnessed the company foray into imports of different types of tools such as tapping tools, grinding tools, etc making us the leading player in India in these categories.

The year 2015 saw us entering into the sugar industry component with the manufacture of the Heavy Duty Sugar Dust Collector machine, FlexRepair40 machine.

In 2016, we added **SHINGARE INDUSTRIES PVT. LTD.** a new company in our group. We were awarded ISO 9001:2015 certification for strictly followed quality norms and processes.

## Dedicated Staff:

We have a dedicated team of more than 40 people, many of whom are with us since the early days of the company. We have an excellent blend of youth, knowledge, and experience in our ranks.

## Export oriented:

We export over 60% of our products to more than 55 countries all over the globe.

## Expansion:

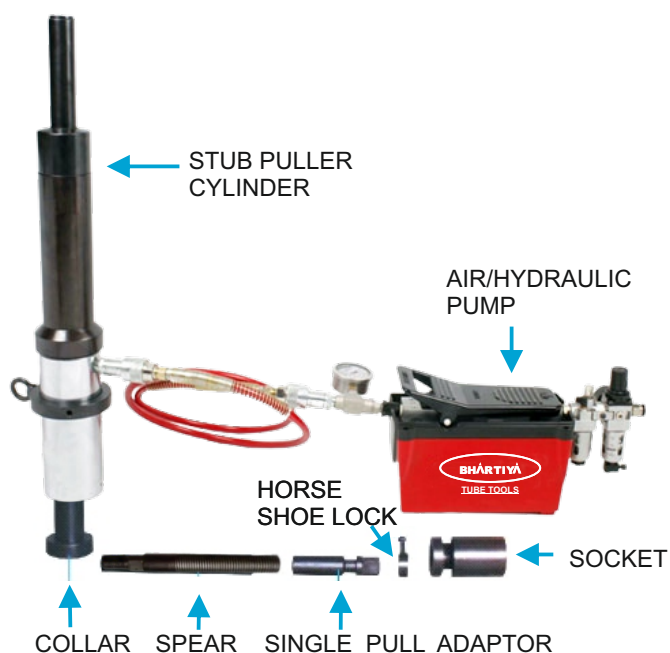
We feel the need to expand our business to enable us to serve the people of this country better. With this aim in mind, we established a new company in the name of SHINGARE INDUSTRIES PVT. LTD.

**Our main motto of business is “Growth with Trust.”**

Our mission is to innovate and create an import substitute products in India.



**TUBE TOOLS**



## STUB PULLER CYLINDER

MODEL	BAHSP - 9
Extraction Load (Ton)	9
Overall Dimension (mm) L x	550 x Ø 104.0
Stroke (mm)	150
Recommended Tube Sizes	Up to 1.1/4" OD
Pulling Speed Secs. / Stroke	30
Weight (kg) with accessories	18.5

## PULLING SPEARS:



MODEL	TUBE O.D. INCH	TUBE THK. BWG	MODEL	TUBE O.D. INCH	TUBE THK. BWG
BSS - 0916	3/8	16 - 17	BSS - 2212	7/8	12 - 13
BSS - 0918	3/8	18 - 19	BSS - 2214	7/8	14 - 15
BSS - 0920	3/8	20 - 21	BSS - 2216	7/8	16 - 17
BSS - 0922	3/8	22 - 23	BSS - 2218	7/8	18 - 19
BSS - 1214	1/2	14 - 15	BSS - 2220	7/8	20 - 21
BSS - 1216	1/2	16 - 17	BSS - 2509	1	9 - 10
BSS - 1218	1/2	18 - 19	BSS - 2510	1	10 - 11
BSS - 1220	1/2	20 - 21	BSS - 2512	1	12 - 13
BSS - 1222	1/2	22 - 23	BSS - 2514	1	14 - 15
BSS - 1512	5/8	12 - 13	BSS - 2516	1	16 - 17
BSS - 1514	5/8	14 - 15	BSS - 2518	1	18 - 19
BSS - 1518	5/8	18 - 19	BSS - 2520	1	20 - 21
BSS - 1520	5/8	20 - 21	BSS - 3112	1.1/4	12 - 13
BSS - 1911	3/4	11 - 12	BSS - 3114	1.1/4	14 - 15
BSS - 1912	3/4	12 - 13	BSS - 3116	1.1/4	16 - 17
BSS - 1914	3/4	14 - 15	BSS - 3118	1.1/4	18 - 19
BSS - 1916	3/4	16 - 17	BSS - 3120	1.1/4	20 - 21
BSS - 1918	3/4	18 - 19			
BSS - 1920	3/4	-			

## AIR / HYDRAULIC STUB PULLER

- The tool is suitable for small maintenance application
- The system is designed for removal of stubs from heat exchanger or condensers.
- Required only industrial air supply of 90psi
- Compact, light weight & portable.
- No electrical supply required.
- Quick & easy arrangement to reduce downtime.
- Suitable for explosive environment.
- Useful in confined areas.

### ABOVE SYSTEM INCLUDES FOLLOWING

- > Hyd Hose 6 ft long with QRC.
- > Support Collar 1
- > Support Collar 2
- > Horse Shoe Lock with adaptor.
- > Hyd Hose 6 ft long with QRC.
- > Pulling Cylinder with Accessories.
- > Spring Balancer.

## AIR/HYDRAULIC PUMP- MODEL NO. BASP-1008

Length	(mm)	264
Width	(mm)	135
Height	(mm)	205
Weight without oil	(kg)	6.6
Hose Length	(ft.)	6
Hose I.D.	(Inch)	1/4"
Air inlet Port		1/2" BSP
Hydraulic Port		3/8" NPT
Hydraulic Oil		VG ISO 68
Working Air pressure (bar)		Grade
Working hydraulic		7
sure	(bar)	700

## SPRING BALANCER:



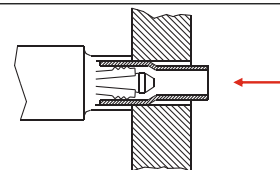
MODEL	BALANCING CAPACITY	SUITABLE FOR
BWF - 09	4.5 - 9.0	BWF - 9

# AUTO STUB PULLER

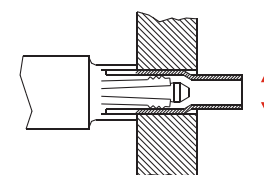


- Compact and lightweight pulling gun, easy to operate inside boiler drum with 24 Volt DC control.
- Gripping and pulling done in single operation.
- Designed for fast removal of ferrous and non-ferrous tubes from Condensers, Heat Exchangers, and Boilers.
- A rapid stroke allows the removal of 10 tubes a minute with little operator efforts.
- Pneumatic version available for hazardous and explosive areas. Low setup time and ease of operation.
- Auto ejection of tube after removal.
- Remove tubes without any damage to tube sheet.
- Auto Switchover from low-pressure high flow to high-pressure low flow on load and back again when load is released.
- Interchangeable pulling gun with same power pack.
- Can pull from 13 mm to 51 mm I.D. tubes
- Significant savings of time & money over conventional methods of stub removal.
- Can pull from 13 mm to 51 mm I.D. tubes.

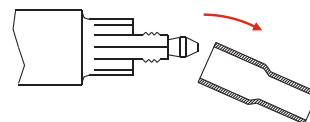
1) Tube Pulling



2) Opening of jaws inside tube



3) Removal of pulled tube



## AUTO STUB PULLER SET

Model	Tube Size ID		Stub Pulling Gun Model	Hydraulic Powerpack Model	Spring Balancer Model To Suspend Gun
	Mm	Inch			
SATP-1	13 - 31	1/2" - 1.1/4"	SATP - 900	PPP-35 / EPP - 15	SEW - 22
SATP-2	31 - 51	1.1/4" - 2"	SATP - 1100	PPP-35 / EPP - 15	SEW - 40

## HYDRAULIC POWER PACK - SPECIFICATIONS

Model Number	PPP-35	EPP-15
Power	Pneumatic	Electric
Motor H.P	3.5	1.5
Flow rate	4.5 lpm at 0 - 70 bar 1.8 lpm at 70 - 700 bar	3.5 lpm at 0 - 70 bar 0.45 lpm at 70 - 700 bar
Tank capacity (liters)	10	10
Weight including oil (kg)	40	52

**Note :** 5 mtr. long Remote Control and 5 mtr. long Hose set are supplied with Power pack.



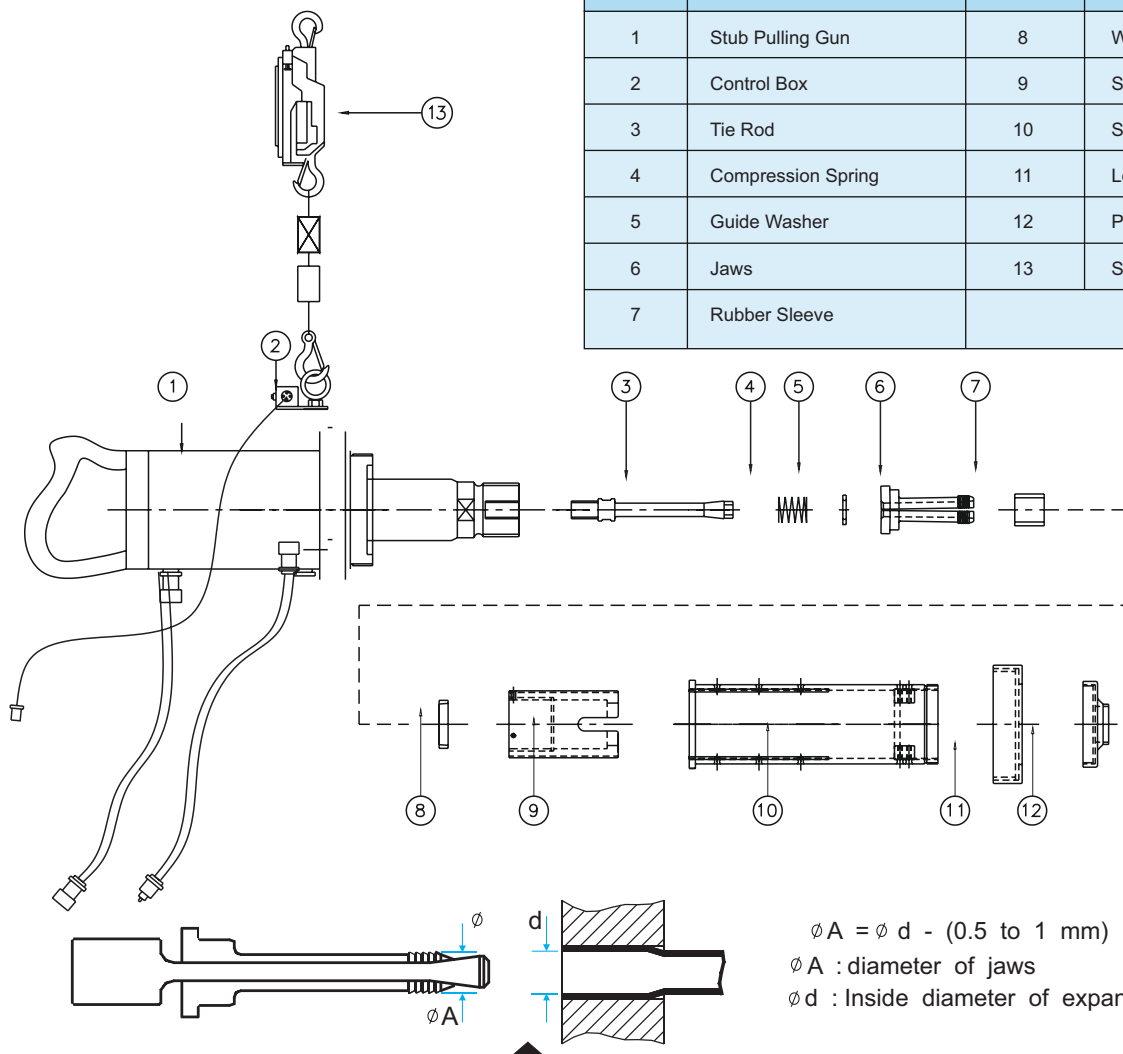
## STUB PULLING GUN - SPECIFICATIONS

Model Number	SATP-900	SATP-1100
Capacity / inside dia. of expanded tube (mm)	13 to 31	31 to 51
Maximum stroke (mm)	75	120
Weight (kg)	21	39
Max. Working Pressure (bar)	700	700
Max. Pulling force (ton)	13	31



**WORKING CONSUMABLES FOR AUTO STUB PULLER**

Part Number	Description	Part Number	Description
1	Stub Pulling Gun	8	Washer
2	Control Box	9	Sleeve
3	Tie Rod	10	Support Collar
4	Compression Spring	11	Lock Nut
5	Guide Washer	12	Pulling Collar
6	Jaws	13	Spring Balancer
7	Rubber Sleeve		



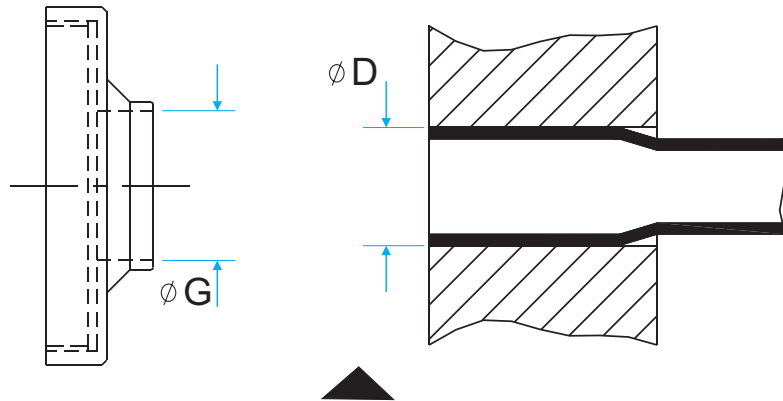
$\phi A$		Model
Mm	Inch	
12	.472	960/120
13	.512	960/130
14	.551	960/140
15	.591	960/150
16	.630	960/160
17	.669	960/170
18	.709	960/180
19	.748	960/190
20	.787	960/200
21	.827	960/210
22	.866	960/220
23	.906	960/230
24	.945	960/240
25	.984	960/250
26	1.024	960/260
27	1.063	960/270
28	1.102	960/280
29	1.142	960/290
30	1.181	960/300

$\phi A$		Model
Mm	Inch	
31	1.220	1160/310
32	1.260	1160/320
33	1.299	1160/330
34	1.339	1160/340
35	1.378	1160/350
36	1.417	1160/360
37	1.457	1160/370
38	1.496	1160/380
39	1.535	1160/390
40	1.575	1160/400
41	1.614	1160/410
42	1.654	1160/420
43	1.693	1160/430
44	1.732	1160/440
45	1.772	1160/450
46	1.811	1160/460
47	1.850	1160/470
48	1.890	1160/480
49	1.929	1160/490
50	1.969	1160/500

## JAWS - TIE ROD - SUPPORT COLLAR - SLEEVE - PULLING COLLAR FOR STP TUBE PULLER

Gun Model	Jaws Model	Tie Rod Model	Support Collar	Sleeve Model	Pulling Collar Model	Spring Balancer
SATP-900	960/120 to 960/140	970/55	SC-980	S-990	Prefer chart below	BWF-22
	960/150 to 960/180	970/60				
	960/190 to 960/200	970/80				
	960/210 to 960/240	970/120				
	960/250 to 960/300	970/160				
SATP-900	1160/310 to 1160/350	1170/220	SC-1180	S-1190	PC-1150 Refer chart below	BWF-40
	1160/360 to 1160/400	1170/270				
	1160/410 to 1160/450	1170/320				
	1160/460 to 1160/500	1170/370				

### COLLARS FOR STP TUBE PULLERS



$$\phi G = \phi D + 3 \text{ mm}$$

$\phi A$  : In side diameter of collar

$\phi D$  : Out side diameter of tube to be pulled

#### FOR CTP - 900 PULLING COLLAR PC-950

OD OF TUBE		INSIDE DIA. OF COLLAR		Model
mm	Inch	mm	Inch	
15.87	5/8"	19.0	0.748"	PC-950/190
19.05	3/4"	22.0	0.866"	PC-950/220
22.22	7/8"	25.0	0.984"	PC-950/250
25.40	1"	29.0	1.142"	PC-950/290
25.40	1.1/8"	32.0	1.260"	PC-950/320
31.75	1.1/4"	35.0	1.378"	PC-950/350
34.92	1.3/8"	38.0	1.496"	PC-950/370

#### FOR CTP - 900 PULLING COLLAR PC-950

OD OF TUBE		INSIDE DIA. OF COLLAR		Model
mm	Inch	mm	Inch	
38.10	1.1/2"	41.0	1.614"	PC-1150/410
41.27	1.5/8"	44.0	1.732"	PC-1150/440
44.45	1.3/4"	48.0	1.890"	PC-1150/480
47.62	1.7/8"	51.0	2.001"	PC-1150/510
50.80	2"	54.0	2.126"	PC-1150/540
53.97	2.1/8"	57.0	2.244"	PC-1150/570



## TUBE DRIFT/KNOCKOUT TOOL



- Used with pneumatic chipping hammer to knock out tubes / tube stubs from tube sheet.
- Available in 01 and 06 shanks as standard. 15 (Jumbo) shank available on request.
- Suffix model number with tube gauge and shank when ordering. Example for 3/4" O.D. 16G, 06 shank, model number will be KT-750-16-06.
- Tube Drifts are available for mm tube sizes also. Please enquire. Standard reach is 6". Longer reaches are available.

## TUBE WALL REDUCER



- Used to 'thin' the walls of heavy gauge tubes as a step in their removal from tube sheet.
- Suffix model number with tub gauge when ordering.
- Example fo 3/4"O.D. 16G, model number will be WR-750-16.
- Wall reducers available for mm tube sizes also. Please enquire.
- Wall reducers are suited for tube sheets up to 5" thick. Longer reaches are available.

## COLLAPSING TOOL



- Used to collapse tube and drive out collapsed tube from tube sheet with a chipping hammer.
- Recommended for use on 16G and thinner tubes.
- Available on 01 and 06 shanks as standard.
- Suffix model number with shank number when ordering.
- Example for 3/4" O.D. 16G, 06 shank, model number will be CT-750-06.
- Collapsing tools are available for mm tube sizes and larger tube sizes. Please enquire.

Tube O.D. inch	Model Number
3/8	KT-375
1/2	KT-500
5/8	KT-625
3/4	KT-750
7/8	KT-875
1	KT-1000
1.1/4	KT-1250
1.1/2	KT-1500
1.3/4	KT-1750
2	KT-2000
2.1/2	KT-2500
2.3/4	KT-2750
3	KT-3000
3.1/4	KT-3250
3.1/2	KT-3500
4	KT-4000

Tube O.D. Inch	Model Number	MT Shank #
3/8	WR-375	1
1/2	WR-500	2
5/8	WR-625	2
3/4	WR-750	2
7/8	WR-875	2
1	WR-1000	3
1.1/4	WR-1250	3
1.1/2	WR-1500	3
1.3/4	SH-1750	3
2	SH-2000	3
2.1/2	SH-2500	4
2.3/4	SH-2750	4
3	SH-3000	4
3.1/4	SH-3250	4
3.1/2	SH-3500	4
4	SH-4000	4

Tube O.D. inch	Model Number
3/8	ST-375
1/2	ST-500
5/8	ST-625
3/4	ST-750
7/8	ST-875
1	ST-1000
1.1/4	ST-1250
1.1/2	ST-1500
1.3/4	ST-1750
2	ST-2000
2.1/2	ST-2500

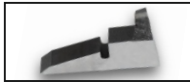
Chipping Hammer with safety retainer for use with Tube Drifts / Collapsing Tools.

## MODEL CH-1 - SPECIFICATION

Blows/min	Bore	Stroke	Weight
1600	1.1/8" (28.5mm)	3.1/4" (82.5mm)	16lbs (7.0kg)



# PUSH TYPE INTERNAL TUBE CUTTER - ATP SERIES



**TOOL BIT**



- **SHINGARE** "Push Type" Internal Tube Cutter quickly cuts through the walls of ferrous tubes in Condensers and Heat Exchangers as a step in their removal from the tube sheet.
- This sturdy "Push Type" Internal Tube Cutter can be used with a portable Electric or Air Drill Motor.
- The replaceable cutting bit can be interchanged in a few seconds. Standard adjustable reach is 4"(101.6mm) and they are available in optional increments of 2"(50.8mm). "A" reach = 6"(152.4mm). "B" reach = 8"(203.2mm). "C" reach = 10"(254.0mm) etc. All Tube Cutters come with a complete set of pilots covering the entire range of tube thicknesses for a particular tube O.D. (SAP-625 tube cutters come with a built in pilot suitable for one tube ID only).
- "Push Type" Cutter is simple to operate. Merely insert it into the tube, apply power, press inward and the tube can be cut in a few seconds. Releasing of inward pressure automatically retracts the Cutter Bit. This Cutter is equipped with an adjustable collar suitable for reaching into tubes at various depths.
- All Cutters are available for MM tube sizes also. Please enquire.

Tube O.D.	Tube Gauge (BWG)	Tube Cutter Model No. (Std. Reach)	Spare Cutting Bit Model No.
5/8"	14 - 22	BATP-625	BATP-625-SB
3/4"	14 - 22	BATP-750	BATP-750-SB
7/8"	14 - 22	BATP-875	BATP-875-SB
1"	12 - 22	BATP-1000	BATP-1000-SB
1.1/4"	12 - 22	BATP-1250	BATP-1250-SB
1.1/2"	12 - 22	BATP-1500	BATP-1500-SB

**Note :** When ordering Spare Cutting Bits, please specify whether ordering for Non Ferrous, Ferrous or Stainless Tubes. Cutter Bits for these 3 types of tubes are different. Please refer to operation manual for parts list and detailed features.



**TOOL BIT**



**INTERNAL TUBE CUTTERS**

- The Internal Tube Cutter PR-68 is driven via the square in a clockwise direction using either an electric, pneumatic or hydraulic driving machine.
- PR-68 tube cutters are ideal for cutting thick walled boiler tubes of 2" O.D. and higher.
- The Internal Tube Cutter PR-68 is driven via the square in a clockwise direction using either an electric, pneumatic or hydraulic driving machine.

Size	Tool Model Number	Spare Bit Model Number	Tube I.D. Range		Max Tube O. D.		Body Diameter		Drive Square Male
			mm	Inch	mm	Inch	mm	Inch	
095	0680951	1680951	10 - 12	.394" - .472"	15	1.591"	9.5	.374"	
105	0681051		11 - 13	.433" - .512"	18	.709"	10.5	.413"	
115	0681151	1681151	12 - 14	.472" - .551"	19	.748"	11.5	.453"	
125	0681251		13 - 15	.519" - .591"	20	.787"	12.5	.492"	
135	0681351	1681251	14 - 17	.551" - .669"	23	.906"	13.5	.531"	
155	0681551		16 - 19	.630" - .748"	25	.984"	15.5	.610"	
175	0681751	1681751	18 - 21	.709" - .827"	27	1.063"	17.5	.689"	1/2"
195	0681951	1681951	20 - 25	.787" - .984"	34	1.339"	19.5	.768"	
245	0682451	1682451	25 - 30	.984" - 1.181"	38	1.496"	24.5	.965"	
290	0682901		30 - 35	1.181" - 1.378"	43	1.693"	29	1.142"	
330	0683301	1682901	35 - 40	1.378" - 1.575"	48	1.890"	33	1.299"	
380	0683801		40 - 50	1.575" - 1.969"	58	2.126"	38	1.496"	
480	0684801		50 - 60	1.969" - 2.362"	68	2.677"	48	1.890"	
530	0685301	1684801	55 - 65	2.165" - 2.559"	73	2.874"	53	2.087"	
630	0686301		65 - 75	2.559" - 2.953"	83	3.268"	63	2.480"	
730	0687301		75 - 85	2.953" - 3.346"	93	3.661"	73	2.874"	3/4"
830	0688301	1687301	85 - 95	3.346" - 3.740"	103	4.055"	83	3.268"	
930	0689301		95 - 105	3.740" - 4.134"	113	4.449"	93	3.661"	

**Note :** Refer to operation manual for detailed features and parts list.



## OUR MAJOR CLIENTS

Please see below our robust and valued client list that uses BHARTIYA products repeatedly. We take pride in our partnerships and the ability to grow with such amazing group of companies.



**SHINGARE**  
INDUSTRIES PVT LTD

SHINGARE INDUSTRIES PVT. LTD.  
Formerly known as Bharatiya Industries

Manufacturer & Exporter of Tube Cleaners, Flexible Shafts, Tube Tools, Impact Sockets, Bolting Tools, Pipe Cold Cutting and Beveling Machines, Torque Tools, Grinding Tools, Tapping Tools, Hydraulic Torque Wrench, Electric Torque Wrench, Manual Torque Wrench & Torque Multiplier

**Factory Add:** A-48 B Osiya Mataji Compound, Village Kalher, Retibunder Road, Tal. Bhiwandi, Dist. Thane - 421302, Maharashtra.

**Hade Off:** B-227, 2nd Floor, Eastern Business District (Magnet/Neptune Mall), L.B.S. Marg, Bhandup (west), Mumbai - 400078.

+91 77188 96512 | +91 90290 05461 | [bharatflex@yahoo.com](mailto:bharatflex@yahoo.com) | [spradip@tubecleaner.co.in](mailto:spradip@tubecleaner.co.in)

[www.shingare.com](http://www.shingare.com) | [www.tubecleaner.co.in](http://www.tubecleaner.co.in)